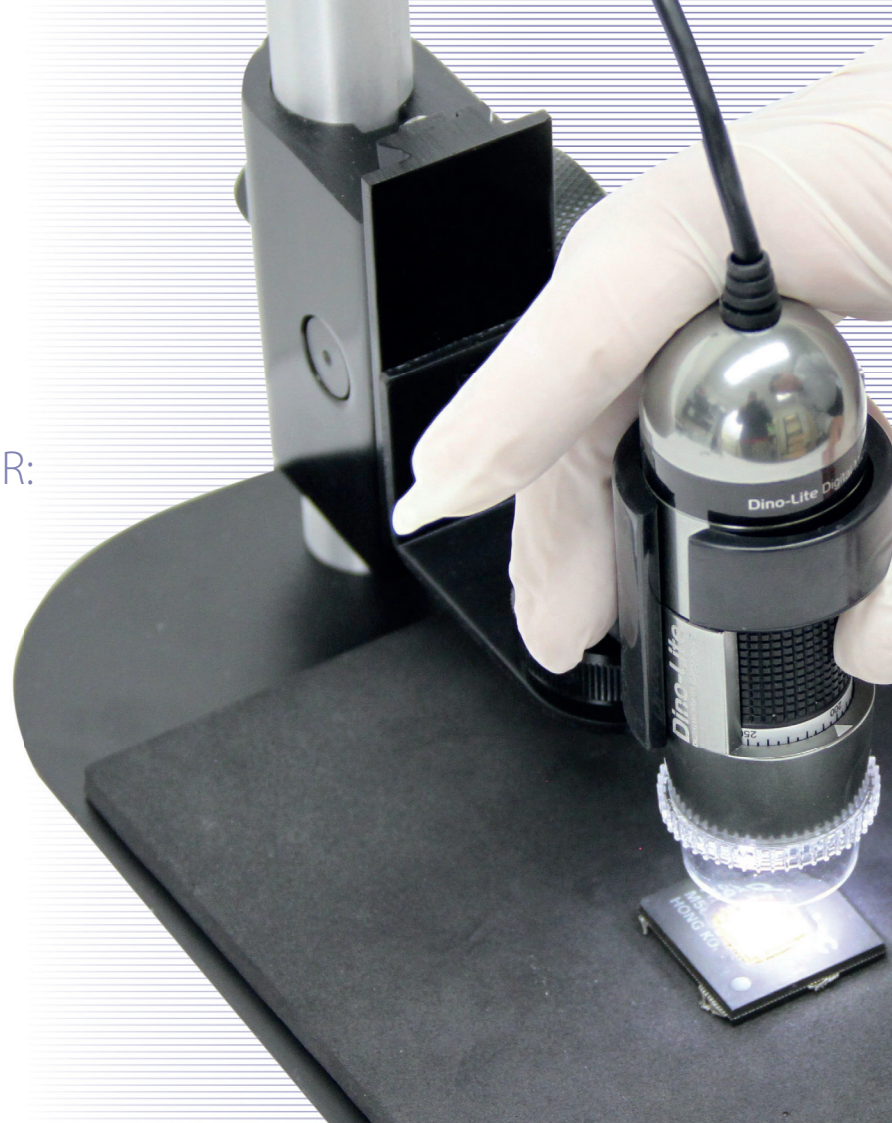


Dino-Lite
Digital Microscope
The Industry Standard

DINO-LITE
ESD-SAFE PRODUCT RANGE FOR:
THE ELECTRONICS
INDUSTRY



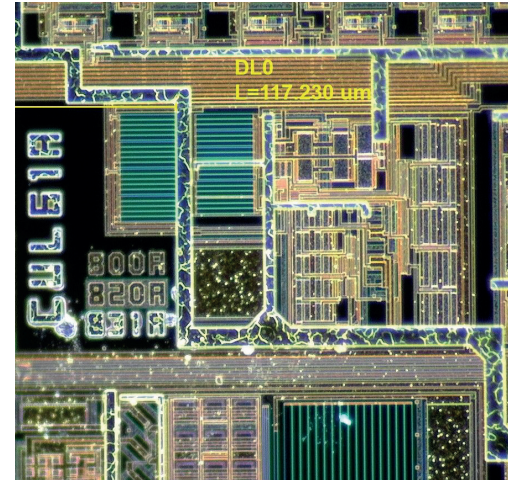
A FULL RANGE OF ESD SAFE DIGITAL MICROSCOPES

Dino-Lite offers a full range of Electrostatic Discharge (ESD) safe digital microscopes and accessories, specifically designed with the needs of the electronics industry in mind. The robust aluminum housing of the ESD-safe microscope models generates no significant static. The special ESD-safe stands are finished with a specially formulated, ESD-safe coating, developed for environments involving sensitive electronic circuits. This makes the Dino-Lite a safe and essential tool for anyone in the electronics industry, for inspection, quality control, rework/repair or precision assembly tasks.

DINO-LITE OFFERS A FULL RANGE OF ESD-SAFE
DIGITAL MICROSCOPES AND ACCESSORIES,
SPECIFICALLY DESIGNED WITH THE NEEDS
OF THE ELECTRONICS INDUSTRY IN MIND

APPLICATIONS

- > Solder Inspection
- > Component Inspection
- > Failure Analysis
- > Quality Control
- > Counterfeit Component Detection
- > BGA Inspection Assembly

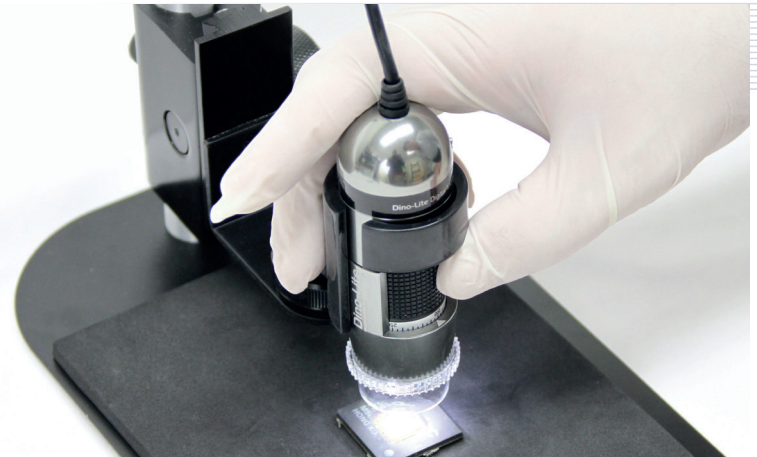
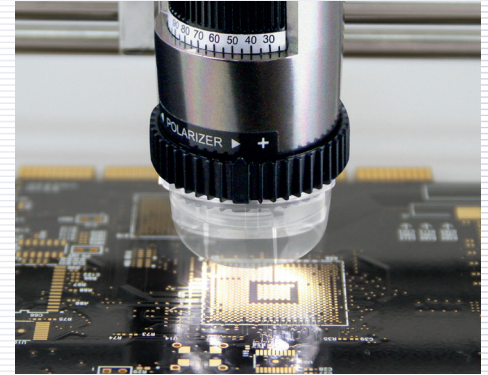


FEATURES

All USB Dino-Lite models come with a professional, multilingual software suite, both for Windows and MacOS. With the software, images and videos can be captured, or shared live over the internet, which makes it very simple to cooperate with colleagues, customers or suppliers all over the world. The integrated measurement functionality with calibration option allows for accurate measurements of all sorts (line, circle, angles, polygons, etc.). The integrated, fully adjustable polarizer reduces reflections and glare resulting in crystal clear high quality images.

THE POLARIZER REDUCES
THE REFLECTIONS OF THE LEDS,
RESULTING IN CRYSTAL CLEAR
HIGH QUALITY IMAGES

Several models offer a long working distance which makes working under the microscope possible. The Micro-Touch snapshot function allows for easy taking of pictures, simply by touching the sensor on the microscope. For situations where image capturing is not required, but real-time images are vital, the Dino-Lite DVI models or USB 3.0 models are the right choice. They offer a very high frame rate (up to 60 fps) and crystal clear images.



DINO-LITE HIGH SPEED

More info: www.dino-lite.eu/highspeed

AM5018MZT

The main features of the AM5018MZT are:

HD 720P | High Definition connection (DVI) up to 60fps | 10-70x & 200x magnification | Adjustable integrated polarizer | 8 white switchable white LEDs | Metal housing.



HD HD 720 p

 DVI CONNECTOR

 ADJUSTABLE ~10-70x & 200x

 POLARIZER ANTI-REFLECTION

 8 WHITE LEDs SWITCHABLE

 METAL HOUSING

AM5018MZTL

The main features of the AM5018MZTL are:

HD 720P | High Definition connection (DVI) up to 60fps | 20-90x magnification | Long Working Distance (LWD) | Adjustable integrated polarizer | 8 white switchable white LEDs | Metal housing.



HD HD 720 p

 DVI CONNECTOR

 CONTINUOUS ~20x-90x

 LONG WORKING DISTANCE 4-15 cm

 POLARIZER ANTI-REFLECTION

 8 WHITE LEDs SWITCHABLE

 METAL HOUSING

AM73115MZTL

The main features of the AM73115MZTL are:

5 Megapixel sensor | USB 3.0 connection with up to 45fps | 10-140x magnification | Adjustable integrated polarizer | 8 white switchable white LEDs | Metal housing | Flexible LED Control (FLC) | Extensive measurement functionality | Calibrated measurements | Exchangeable caps.



Also available AM73115MZT
standard working distance, 20-220x Magnification



5 MEGAPIXEL
2592 x 1944



USB 3.0



CONTINUOUS
~10x-140x



POLARIZER
ANTI-REFLECTION



8 WHITE LEDs
SWITCHABLE



METAL
HOUSING



FLEXIBLE
LED CONTROL



MEASUREMENT
FUNCTIONALITY



EXCHANGEABLE
CAP

AM73915MZTL

The main features of the AM73915MZTL are:

5 Megapixel sensor | USB 3.0 connection with up to 45fps | 10-140x magnification | Adjustable integrated polarizer | 8 white switchable white LEDs | Metal housing | Flexible LED Control (FLC) | Extended Depth of Field (EDOF) | Extended Dynamic Range (EDR) | Automatic Magnification Reading (AMR) | Extensive measurement functionality | Calibrated measurements | Exchangeable caps.



Also available AM73915MZT
standard working distance, 20-220x Magnification



5 MEGAPIXEL
2592 x 1944



USB 3.0



CONTINUOUS
~10x-140x



POLARIZER
ANTI-REFLECTION



8 WHITE LEDs
SWITCHABLE



METAL
HOUSING



FLEXIBLE
LED CONTROL



EXTENDED
DEPTH OF FIELD



EXTENDED
DYNAMIC RANGE



AUTOMATIC
MAGNIFICATION
READING



MEASUREMENT
FUNCTIONALITY



EXCHANGEABLE
CAP

DINO-LITE UNIVERSAL

More info: www.dino-lite.eu/universal

AM4013MZT

The main features of the AM4013MZT are:

1.3 Megapixel sensor | USB 2.0 connection | 10-70x & 200x magnification | Adjustable integrated polarizer | 8 white switchable white LEDs | Metal housing | Extensive measurement functionality | Calibrated measurements.



1.3 MEGAPIXEL
1280 x 1024



USB 2.0



ADJUSTABLE
~10-70x & 200x



POLARIZER
ANTI-REFLECTION



8 WHITE LEDs
SWITCHABLE



METAL
HOUSING



MEASUREMENT
FUNCTIONALITY

DINO-LITE LONG WORKING DISTANCE

More info: www.dino-lite.eu/longworkingdistance

AM4013MZTL

The main features of the AM4013MZTL are:

1.3 Megapixel sensor | USB 2.0 connection | 10-90x magnification-Long Working Distance (LWD) | Adjustable integrated polarizer | 8 white switchable white LEDs | Metal housing, Extensive measurement functionality | Calibrated measurements.



1.3 MEGAPIXEL
1280 x 1024



USB 2.0



CONTINUOUS
~10x-90x



LONG WORKING
DISTANCE
4-15 cm



POLARIZER
ANTI-REFLECTION



8 WHITE LEDs
SWITCHABLE



METAL
HOUSING



MEASUREMENT
FUNCTIONALITY

DINO-LITE LONG WORKING DISTANCE

More info: www.dino-lite.eu/longworkingdistance

AM7115MZTL

The main features of the AM7115MZTL are:

5 Megapixel sensor | USB 2.0 connection | 10-140x magnification
Long Working Distance (LWD) | Adjustable integrated polarizer
8 white switchable white LEDs | Metal housing | Flexible LED Control
(FLC) | Extensive measurement functionality | Calibrated measurements | Exchangeable caps.



Also available AM7115MZT
standard working distance, 20-220x Magnification



5 MEGAPIXEL
2592 x 1944



USB 2.0



CONTINUOUS
~10x-140x



4-15 cm

LONG WORKING
DISTANCE



POLARIZER
ANTI-REFLECTION



8 WHITE LEDs
SWITCHABLE



METAL
HOUSING



FLEXIBLE
LED CONTROL



MEASUREMENT
FUNCTIONALITY



EXCHANGEABLE
CAP

AM7915MZTL

The main features of the AM7915MZTL are:

5 Megapixel sensor | USB 2.0 connection | 10-140x magnification
Long Working Distance (LWD) | Adjustable integrated polarizer
8 white switchable white LEDs | Metal housing | Flexible LED Control
(FLC) | Extended Depth of Field (EDOF) | Extended Dynamic Range
(EDR) | Automatic Magnification Reading (AMR).



Also available AM7915MZT
standard working distance, 20-220x Magnification



5 MEGAPIXEL
2592 x 1944



USB 2.0



CONTINUOUS
~10x-140x



4-15 cm

LONG WORKING
DISTANCE



POLARIZER
ANTI-REFLECTION



8 WHITE LEDs
SWITCHABLE



METAL
HOUSING



FLEXIBLE
LED CONTROL



EXTENDED
DEPTH OF FIELD



EXTENDED
DYNAMIC RANGE



AUTOMATIC
MAGNIFICATION
READING

DINO-LITE ACCESSORIES

More info: www.dino-lite.eu/accessories



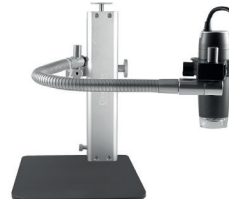
RK-06-AE

The Dino-Lite RK-06-AE stand is a sturdy and stable mid-range stand solution that can be used with all Dino-Lite digital microscopes. It is constructed of stainless steel and lightweight aluminum and offers precise focus adjustment as well as a quick vertical release function.



RK-10A

The Dino-Lite RK-10A stand is a sturdy and stable high-range stand solution that can be used with all Dino-Lite digital microscopes. It is constructed of stainless steel and lightweight aluminum and offers precise focus adjustment as well as a quick vertical release function.



RK-10-FX

The RK-10-FX is an optional flexible arm extension for the RK-06-AE and the RK-10A stand.



RK-10-PX

The RK-10-PX is a XY positioning arm with accurate and smooth adjustment options. It is a great add-on to the high precision RK-10A and the RK-06-AE stand.



RK-10-EX

The RK-10-EX is an optional horizontal arm attachment for the RK-06-AE and the RK-10A stand.



RK-10-VX

RK-10-VX is an optional vertical arm attachment for the RK-06-AE and the RK-10A stand.



MS35BE STAND

Square metal base with ESD-safe coating with column and support providing several adaptable heights. The MS35BE comes with an ESD (electrostatic discharge) safe base plate instead of the standard MS35B base plate.



MS36BE STAND

Square metal base with ESD-safe coating with column and support providing several adaptable heights. The MS36BE comes with an ESD (electrostatic discharge) safe base plate instead of the standard MS36B base plate. The MS36BE has a horizontal beam to enable additional flexibility in the horizontal plane.



SW-F1

Foot pedal accessory allowing you to take a picture with your foot

DINO-LITE SOFTWARE

More info: www.dino-lite.eu/support/software

ADVANCED SOFTWARE INCLUDED

A professional, reliable software environment is essential when working with computer accessories like a USB microscope. All Dino-Lite USB products are equipped with an in-house developed software suite. The Dino-Capture software is continuously developed, is free of charge for Dino-Lite users and has an automatic update feature. DinoCapture software is available for Windows and DinoXcope for Macintosh computers. DinoCapture software is intuitive, user-friendly and can be used without hardly any training. Free online & e-mail software support is available.



LANGUAGES

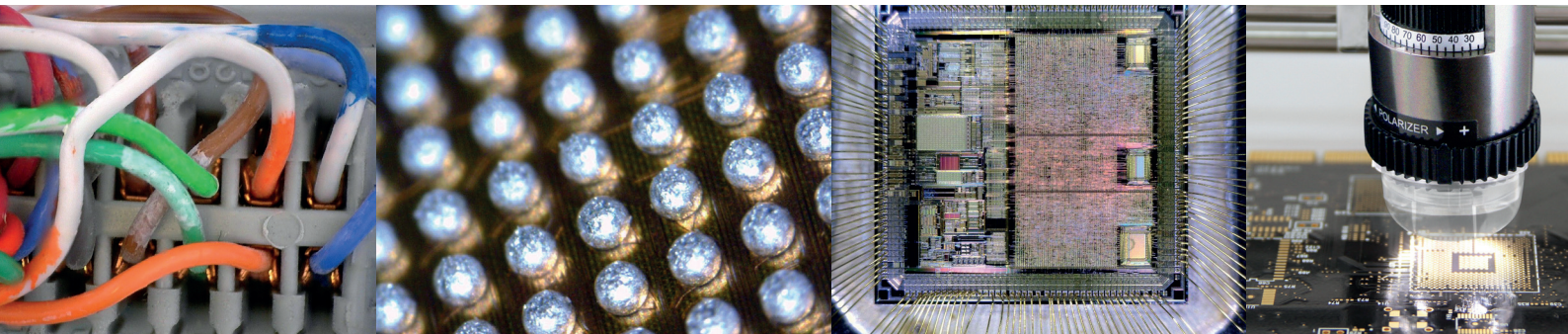
The DinoCapture 2.0 software is available in many languages, such as: English, German, French, Spanish, Chinese, Japanese, Portuguese, Italian, Russian, Dutch, Greek, Hungarian, Polish, Romanian, Swedish, Finnish, Danish, Czech, Croatian, Norwegian, Turkish.

MAIN SOFTWARE FEATURES

- > Capturing photographs, videos or time-lapsed videos
 - > Saving pictures in several formats
 - > Advanced image processing
 - > Measurement options like: line, radius, circle, 3-point circle, angle, etc.
 - > Measurements on captured images or on live images
 - > Calibration options
 - > E-mail integration
 - > Adding notes and markings on images
 - > Skype integration for real-time on-line sharing with suppliers, customers or colleagues
 - > Connect multiple Dino-Lite microscopes
 - > Controlling lighting options from the software
 - > IP functionality for remote viewing of microscopic images
 - > Barcode/QR code recognition functionality
 - > GPS integration
-

MODEL	RESOLUTION	MAGNIFICATION	CONNECTION	LONG WORKING DISTANCE	MEASUREMENT & CALIBRATION	LED	EXCHANGEABLE CAPS	POLARIZER	METAL HOUSING	ESD-SAFE	GENERATION	ADDITIONAL FEATURES	PRICE RANGE	FPS
AM5018MZT	HD 720p	10-70x, 200x	High Definition (DVI)	N	N	8	N	Y	Y	Y		Freeze Frame Function	€ 600-700	60fps
AM5018MZTL	HD 720p	20-90x	High Definition (DVI)	Y	N	8	N	Y	Y	Y		Freeze Frame Function	€ 600-700	60fps
AM73115MZTL	5 MP	10-140x	USB 3.0	Y	Y	8	Y	Y	Y	Y	Edge	FLC	€ 900-1000	45fps
AM73915MZTL	5 MP	10-140x	USB 3.0	Y	Y	8	Y	Y	Y	Y	Edge	AMR/EDOF/EDR/FLC	€ 1100-1200	45fps
AM4013MZT	1,3 MP	10-70x, 200x	USB 2.0	N	Y	8	N	Y	Y	Y			€ 400-500	
AM4013MZTL	1,3 MP	10-90x	USB 2.0	Y	Y	8	N	Y	Y	Y			€ 500-600	
AM7115MZTL	5 MP	10-140x	USB 2.0	Y	Y	8	Y	Y	Y	Y	Edge	FLC	€ 700-800	
AM7915MZTL	5 MP	10-140x	USB 2.0	Y	Y	8	Y	Y	Y	Y	Edge	AMR/EDOF/EDR/FLC	€ 900-1000	
RK-06AE	Sturdy and stable mid-range stand	RK-10-EX	Horizontal arm	RK-10-VX	Vertical arm									
RK-10A	Sturdy and stable high-range stand	RK-10-FX	Flexible arm	RK-10-PX	Positioning arm									

MS35BE	Metal vertical desktop stand
MS36BE	Metal vertical and horizontal desktop stand
SW-F1	Foot pedal
WF-10	WiFi streamer for Dino-Lite USB models + Battery



Dino-Lite Digital Microscope

The Industry Standard

Version 2018/Q3 © Dino-Lite Europe/ IDCP B.V. Unauthorized use and/or duplication of this material without express and written permission from us is strictly prohibited.

Dino-Lite Europe is the importer and master distributor for the Dino-Lite products for Europe, Africa and the Middle East. Dino-Lite products are sold by hundreds of local partners, please check www.dino-lite.eu/wheretobuy for the best reseller in your region.