

Dino-Lite
Digital Microscope
The Industry Standard

DINO-LITE PRODUCT RANGE FOR:

**JEWELERS, WATCHMAKERS,
GEMOLOGISTS AND DIAMOND
DEALERS**



APPLICATIONS

The Dino-Lite digital microscopes are tailored for a broad range of user groups. In the diamond, watch and jewelry business the following target groups can be distinguished:

- > Watch repair and manufacturing
- > Gemologists
- > Diamond jewelers and traders
- > Diamond cutters
- > Jewelers
- > Gemstone collectors

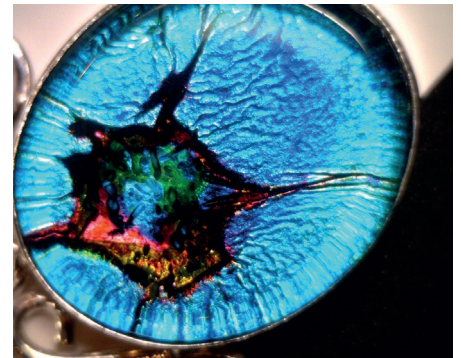
A PROFESSIONAL SOLUTION

Professional solution for inspection, quality control, classifying and working on jewelry, watches, diamonds and gemstones. The series with long working distance of up to 15 cm enables the user to work under the microscope. The built-in adjustable polarizer helps to reduce glare on shiny objects. Available in composite and full aluminum alloy housing.

A POWERFUL TOOL

Dino-Lite has developed a special range of microscopes and accessories, tailored to fit the needs of the jewelry industry. Specially designed polarized lighting makes it an ideal solution for inspection and working on jewelry, watches or precious stones. Bundled with the DinoCapture for Windows or DinoXcope for Macintosh software, the Dino-Lite is a very powerful and easy to use tool.

THE POLARIZER GIVES CRYSTAL CLEAR IMAGES, EVEN WHEN WORKING WITH SHINY OBJECTS

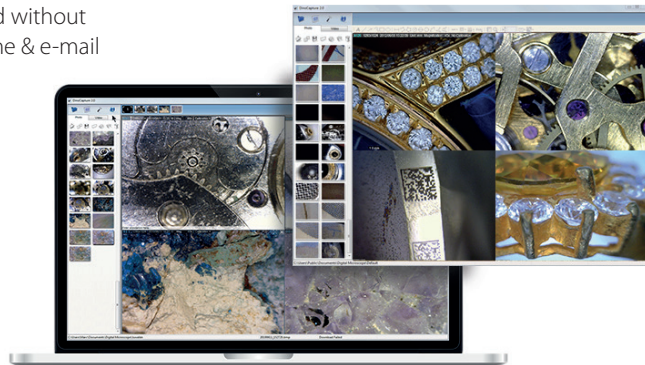


DINO-LITE SOFTWARE

More info: www.dino-lite.eu/support/software

ADVANCED SOFTWARE INCLUDED

A professional, reliable software environment is essential when working with computer accessories like a USB microscope. All Dino-Lite USB products are equipped with an in-house developed software suite. The Dino-Capture software is continuously developed, is free of charge for Dino-Lite users and has an automatic update feature. DinoCapture software is available for Windows and DinoXcope for Macintosh computers. DinoCapture software is intuitive, user-friendly and can be used without hardly any training. Free online & e-mail software support is available.



LANGUAGES

The DinoCapture 2.0 software is available in many languages, such as: English, German, French, Spanish, Chinese, Japanese, Portuguese, Italian, Russian, Dutch, Greek, Hungarian, Polish, Romanian, Swedish, Finnish, Danish, Czech, Croatian, Norwegian, Turkish.

MAIN SOFTWARE FEATURES

- > Capturing photographs, videos or time-lapsed videos
 - > Saving pictures in several formats
 - > Advanced image processing
 - > Measurement options like: line, radius, circle, 3-point circle, angle, etc.
 - > Measurements on captured images or on live images
 - > Calibration options
 - > E-mail integration
 - > Adding notes and markings on images
 - > Skype integration for real-time on-line sharing with suppliers, customers or colleagues
 - > Connect multiple Dino-Lite microscopes
 - > Controlling lighting options from the software
 - > IP functionality for remote viewing of microscopic images
 - > Barcode/QR code recognition functionality
 - > GPS integration
-

DINO-LITE UNIVERSAL

More info: www.dino-lite.eu/universal

AM4113ZT

The main features of the AM4113ZT are:

1.3 Megapixel sensor | USB 2.0 connection | 10-70x & 200x magnification | Adjustable integrated polarizer | 8 white switchable white LEDs | Extensive measurement functionality | Calibrated measurements



1.3 MEGAPIXEL
1280 x 1024



USB 2.0



ADJUSTABLE
~10-70x & 200x



POLARIZER
ANTI-REFLECTION



8 WHITE LEDs
SWITCHABLE



MEASUREMENT
FUNCTIONALITY

AM4013MZT

The main features of the AM4013MZT are:

1.3 Megapixel sensor | USB 2.0 connection | 10-70x & 200x magnification | Adjustable integrated polarizer | 8 white switchable white LEDs | Metal housing | Extensive measurement functionality | Calibrated measurements.



1.3 MEGAPIXEL
1280 x 1024



USB 2.0



ADJUSTABLE
~10-70x & 200x



POLARIZER
ANTI-REFLECTION



8 WHITE LEDs
SWITCHABLE



METAL
HOUSING



MEASUREMENT
FUNCTIONALITY

AM4815ZT

The main features of the AM4815ZT are:

1.3 Megapixel sensor | USB 2.0 connection | 20-220x magnification
Adjustable integrated polarizer | 8 white switchable white LEDs
Extended Depth of Field (EDOF) | Extended Dynamic Range (EDR)
Extensive measurement functionality | Calibrated measurements
Exchangeable caps.



 1.3 MEGA PIXEL
1280 x 1024

 USB 2.0

 ADJUSTABLE
~20-220x

 POLARIZER
ANTI-REFLECTION

 8 WHITE LEDs
SWITCHABLE

 EXTENDED
DEPTH OF FIELD
EDOF

 EXTENDED
DYNAMIC RANGE
EDR

 MEASUREMENT
FUNCTIONALITY

 EXCHANGEABLE
CAP

AM7515MZT

The main features of the AM7515MZT are:

5 Megapixel sensor | USB 2.0 connection | 20-220x magnification
Adjustable integrated polarizer | 8 white switchable white LEDs
Metal housing | Flexible LED Control (FLC) | Automatic Magnification
Reading (AMR) | Extensive measurement functionality | Calibrated
measurements | Exchangeable caps.



 5 MEGA PIXEL
2592 x 1944

 USB 2.0

 ADJUSTABLE
~20-220x

 POLARIZER
ANTI-REFLECTION

 8 WHITE LEDs
SWITCHABLE

 METAL
HOUSING

 FLEXIBLE
LED CONTROL
FLC

 AUTOMATIC
MAGNIFICATION
READING
AMR

 MEASUREMENT
FUNCTIONALITY

 EXCHANGEABLE
CAP

DINO-LITE LONG WORKING DISTANCE

More info: www.dino-lite.eu/longworkingdistance

AM4113ZTL

The main features of the AM4113ZTL are:

1.3 Megapixel sensor | USB 2.0 connection | 10-90x magnification
Long Working Distance (LWD) | Adjustable integrated polarizer
8 white switchable white LEDs | Extensive measurement functionality
Calibrated measurements.



1.3 MEGA PIXEL
1280 x 1024



USB 2.0



CONTINUOUS
~10x-90x



LONG WORKING
DISTANCE
4-15 cm



POLARIZER
ANTI-REFLECTION



8 WHITE LEDs
SWITCHABLE



MEASUREMENT
FUNCTIONALITY

AM4013MZTL

The main features of the AM4013MZTL are:

1.3 Megapixel sensor | USB 2.0 connection | 10-90x magnification
Long Working Distance (LWD) | Adjustable integrated polarizer
8 white switchable white LEDs | Metal housing | Extensive
measurement functionality | Calibrated measurements.



1.3 MEGA PIXEL
1280 x 1024



USB 2.0



CONTINUOUS
~10x-90x



LONG WORKING
DISTANCE
4-15 cm



POLARIZER
ANTI-REFLECTION



8 WHITE LEDs
SWITCHABLE



METAL
HOUSING



MEASUREMENT
FUNCTIONALITY

AM4815ZTL

The main features of the AM4815ZTL are:

1.3 Megapixel sensor | USB 2.0 connection | 10-140x magnification
 Long Working Distance (LWD) | Adjustable integrated polarizer
 8 white switchable white LEDs | Extended Depth of Field (EDOF)
 Extended Dynamic Range (EDR) | Extensive measurement functionality
 Calibrated measurements | Exchangeable caps.



1.3 MEGAPIXEL
1280 x 1024



USB 2.0



CONTINUOUS
~10x-140x



4-15 cm

LONG WORKING
DISTANCE



POLARIZER
ANTI-REFLECTION



8 WHITE LEDs
SWITCHABLE



EDOF

EXTENDED
DEPTH OF FIELD



EDR

EXTENDED
DYNAMIC RANGE



MEASUREMENT
FUNCTIONALITY



EXCHANGEABLE
CAP

AM7915MZTL

The main features of the AM7915MZTL are:

5 Megapixel sensor | USB 2.0 connection | 10-140x magnification
 Long Working Distance (LWD) | Adjustable integrated polarizer
 8 white switchable white LEDs | Metal housing | Flexible LED Control
 (FLC) | Extended Depth of Field (EDOF) | Extended Dynamic Range
 (EDR) | Automatic Magnification Reading (AMR).



5 MEGAPIXEL
2592 x 1944



USB 2.0



CONTINUOUS
~10x-140x



4-15 cm

LONG WORKING
DISTANCE



POLARIZER
ANTI-REFLECTION



8 WHITE LEDs
SWITCHABLE



METAL
HOUSING



FLC

FLEXIBLE
LED CONTROL



EDOF

EXTENDED
DEPTH OF FIELD



EDR

EXTENDED
DYNAMIC RANGE



AMR

AUTOMATIC
MAGNIFICATION
READING

DINO-LITE EYEPIECE

More info: www.dino-lite.eu/eyepiece

EYEPIECE CAMERAS

With the DinoEye eyepiece cameras you can turn your conventional microscope into a digital microscope. You can easily replace the ocular (eyepiece) of your non-digital microscope with the DinoEye eyepiece and connect it via USB to your computer.

The DinoEye TV models can be connected straight into your TV using a TV connection. With the included proprietary DinoCapture software you have a professional software environment for image or video processing, including calibrated measurement features (USB models only).



AM4023X

The AM4023X has different adapters to fit microscopes with 23, 30 or 30,5 mm eyepieces. The DinoCapture software is bundled with the product.



USB 2.0



MEASUREMENT
FUNCTIONALITY



FITS 23, 30, 30,5 mm
OCULARS



1.3 MEGAPIXEL
1280 x 1024



AM7025X

The DinoEye Edge 5MP eyepiece camera provides superior image quality and true colour reproduction.



USB 2.0



MEASUREMENT
FUNCTIONALITY



FITS 23, 30, 30,5 mm
OCULARS



5 MEGAPIXEL
2592 x 1944



CONNECTS
TO C-MOUNT



DINO-LITE ACCESSORIES

More info: www.dino-lite.eu/accessories



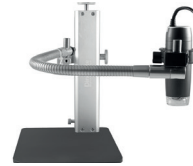
RK-06A

The Dino-Lite RK-06A stand is a sturdy and stable mid-range stand solution that can be used with all Dino-Lite digital microscopes. It is constructed of stainless steel and lightweight aluminum and offers precise focus adjustment as well as a quick vertical release function.



RK-10A

The Dino-Lite RK-10A is a sturdy and stable high-end stand solution that can be used with all the professional Dino-Lite models. It is constructed of resilient stainless steel and lightweight aluminum and offers a precise focus adjustment as well as a quick release function.



RK-10-FX

The RK-10-FX is an optional flexible arm extension for the RK-06A and the RK-10A stand.



RK-10-PX

The RK-10-PX is a XY positioning arm with accurate and smooth adjustment options. It is a great add-on to the high precision RK-10A and the RK-06A stand.



RK-10-EX

The RK-10-EX is an optional horizontal arm attachment for the RK-06A and the RK-10A stand.



RK-10-VX

RK-10-VX is an optional vertical arm attachment for the RK-06A and the RK-10A stand.

DINO-LITE ACCESSORIES

More info: www.dino-lite.eu/accessories



MS35B STAND

Square metal base with column and support providing several adaptable heights.

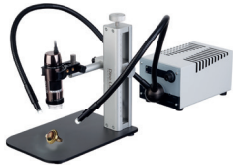


WF-10

The WF-10 WiFi Streamer allows Dino-Lite USB 2.0 models to be used wirelessly in connection with an iOS (iPhone/iPad) or Android app on a tablet, smartphone, or computer.

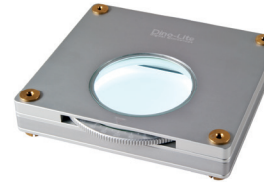


PHOTONIC OPTICS PH-F1



Fibre-optic lighting systems consist of a light source and a fibre-optic light guide. By using fibre optics the sample is not effected by any warmth at all.

More photonic optics on: www.dino-lite.eu



BL-ZW1

The backlight has a built in, freely rotatable polarizer. The accessory is ideally suited to work with Dino-Lite models that have the polarization filter.



RK-02

The RK-02 is a durable gooseneck stand solution designed for flexible and versatile usage with a Dino-Lite digital microscope.



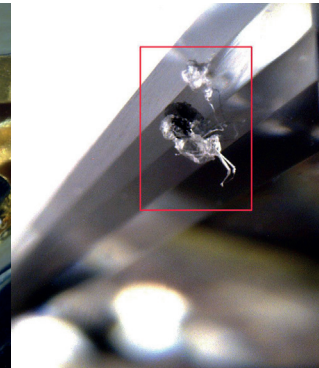
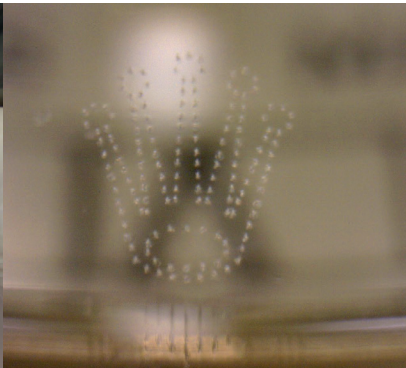
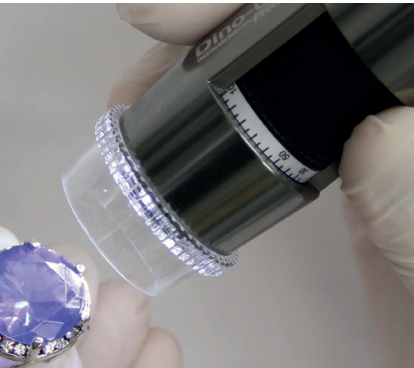
N3C-R

The N3C-R is a passive ring light solution that helps to reveal more details by generating shadow-less illumination.

MODEL	RESOLUTION	MAGNIFICATION	CONNECTION	LONG WORKING DISTANCE	MEASUREMENT & CALIBRATION	LED	EXCHANGEABLE CAPS	POLARIZER	METAL HOUSING	ESD - SAFE	GENERATION	ADDITIONAL FEATURES	PRICE RANGE	OCULAR TUBE DIAMETER
AM4113ZT	1,3 MP	10-70x, 200x	USB 2.0	N	Y	8	N	Y	N	N			€ 300-400	
AM4013MZT	1,3 MP	10-70x, 200x	USB 2.0	N	Y	8	N	Y	Y	Y			€ 400-500	
AM4815ZT	1,3MP	20-220x	USB 2.0	N	Y	8	Y	Y	N	N	Edge	EDOF/EDR	€ 700-800	
AM7515MZT	5 MP	20-220x	USB 2.0	N	Y	8	Y	Y	Y	Y	Edge	AMR/FLC	€ 800-900	
AM4113ZTL	1,3 MP	10-90x	USB 2.0	Y	Y	8	N	Y	N	N			€ 300-400	
AM4013MZTL	1,3 MP	10-90x	USB 2.0	Y	Y	8	N	Y	Y	Y			€ 500-600	
AM4815ZTL	1,3MP	10-140x	USB 2.0	Y	Y	8	Y	Y	N	N	Edge	EDOF/EDR	€ 700-800	
AM7915MZTL	5 MP	10-140x	USB 2.0	Y	Y	8	Y	Y	Y	Y	Edge	AMR/EDOF/EDR/FLC	€ 900-1000	
AM4023X	1,3 MP	Built-in	USB 2.0		Y								€ 200-300	23,30 & 30,5 mm
AM7025X	5 MP	Built-in	USB 2.0		Y						Edge	Manual EDOF	€ 400-500	23,30 & 30,5 mm

RK-06A	Sturdy and stable mid-range stand	RK-10-EX	Horizontal arm	RK-10-VX	Vertical arm
RK-10A	Sturdy and stable high-range stand	RK-10-FX	Flexible arm	RK-10-PX	Positioning arm

MS35B	Metal vertical desktop stand
PHOTONIC OPTICS PH-F1	Fibre-optic lighting system
WF-10	WiFi streamer for Dino-Lite USB 2.0 models
BL-ZW1	Backlight accessory that opens up a whole new range of applications
N3C-R	Passive ring light solution that helps to reveal more details
BC-120B	Spare battery and charger for WF-10



Dino-Lite

Digital Microscope

The Industry Standard

Version 2018/Q3 © Dino-Lite Europe/ IDCP B.V. Unauthorized use and/or duplication of this material without express and written permission from us is strictly prohibited.

Dino-Lite Europe is the importer and master distributor for the Dino-Lite products for Europe, Africa and the Middle East. Dino-Lite products are sold by hundreds of local partners, please check www.dino-lite.eu/wheretobuy for the best reseller in your region.